

PV 1500 VENTILATOR

BEDIENUNGSANLEITUNG USER MANUAL



DE

Ventilator



EN

Ventilator



EC Declaration of Conformity, IIA
In conformity with EC Machine Directive 2006 / 42 / EC,

For unit series: Ventilators
Type: PowerVent 1500

HEYLO GmbH of Im Finigen 9, D-28832 Achim, Germany, declares that, if they are fitted, maintained and used in conformity with the operating instructions and the generally accepted engineering standards, the machines mentioned are in keeping with the fundamental safety and health requirements of the "Machine Ordinance" as well as with the regulations and standards mentioned hereinafter.

Applicable EC directives:

EC Machinery Directive	2006/42/EG
Low Voltage Directive	2014/35/EU
EMC Directive	2014/30/EU
EMC Directive	2009/125/EG
RoHS	2011/65/EU

In case of unauthorised changes of the machine, the directives shall forfeit their validity.

Applied standards:

DIN VDE 0700 Part 1 and Part 30
DIN EN 55014-1:2012-05
EN 60 335-1
EN 60 335-2-30



Achim, 14th November 2016

.....
Dr Thomas Wittleder
- Managing Director -

Table of contents

1. General aspects	10
2. Use of ventilators / air blowers	11
3. Setting up the unit.....	11
4. Cooling and ventilating	11
5. Operation	11
6. Maintenance / repair	12
7. Technical data	13
8. Fault finding and correction	13
9. List of spare parts	14
10. Wiring diagram	15

**Dette produktet
kan kjøpes fra:**

HOLTE
INDUSTRI



holteindustri.no
Håtteitvg. 13, 3810 Gvarv
Tlf. 35 95 93 00



1. General aspects

CAUTION: Read carefully before starting up!

Please observe the notes in the operating instructions carefully. In case of non-observation, the warranty claims will become void. The manufacturer shall not be liable for any damage and/or consequential damage resulting.

Introduction	This chapter contains general information on the unit and manual.
Target group	This manual is intended for technicians who install the unit, carry out maintenance work and replace faulty parts.
Copyright	The duplication of the this manual in whole or in part shall be permitted only upon written approval of HEYLO GmbH.
Reservation	HEYLO GmbH reserves the right carry out modifications and improvements on the product and in the manual at any time without previous announcement.
Disposal	The unit has been designed for many years of operation. If it has to be disposed of, the competent legal regulations have to be observed in environmentally-gentle manner.

DANGER OF ELECTRIC SHOCK

WARNING! The unit has to be earthed.

- Use indoors only.
- Protect against spray water.
- If the motor or the winding has got wet, they have to be dried completely prior to use.
- Cleaning can be carried out by compressed air, a vacuum cleaner or by wiping with a moist cloth. Never use a hose or high-pressure cleaner.
- In order to reduce the risk of fire or electric shock, this fan must never be operated with a speed control.
- Plug the power plug only into a socket secured by ground fault circuit interrupter.
- Never interrupt the grounding.

FIRE HAZARD

- Keep the air inlet and the protective grille free from choking and dirt. A reduced air current may lead to the motor overheating. Do not use in the vicinity of curtains or other things that may clog the air inlet opening.
- Do not use in the vicinity of open fire and heat sources.
- Do not use or store in areas where combustible vapours of petrol, solvent or diluting agents are present.

Safety guidelines

WARNING! Prior to opening the housing for cleaning and maintenance purposes always remove the mains plug.

- Always set up the unit on a solid and plane surface.
- Switch off the device and remove the plug prior to lifting or moving the unit. The strong air current makes the control of the unit difficult.
- Check the power cable prior to use. Do not use the unit with a damaged cable. Replace the cable by a cable of the same type with the corresponding current strength. Protect the cable against damage by switching the unit off first of all and then pulling the power cable. Never pull the cable, but get hold of and pull the plug.
- The unit has been designed for operation at 230 V / 50 Hz. Check whether the socket is earthed.
- Handle the unit with care. Do not drop, throw or place on an instable surface, from where the unit may drop. Rough handling may damage the unit and may lead to dangerous situations or may void the guarantee.
- Keep away from children. Make sure that the unit is not accessible to children when operated unattended.



- The appliance is not to be used by persons (including children) with reduced physical, sensory or mental capabilities, or lack of experience and knowledge, unless they have been given supervision or instruction. Children being supervised not to play with the appliance.

2. Use of ventilators / air blowers

PV 1500 is the ideal working instrument for industry, modern craftsmen and service providers - for ventilation when working in shafts, for drying of hollow spaces after water damage or for extraction during welding work in tanks.

The PV 1500 is set up quickly; the hose is connected to the outlet or inlet quickly; and after the work, everything is safely packed away again. On account of the high protection class, the PV 1500 is especially suitable for the rough outdoor use and on building sites.

3. Setting up the unit

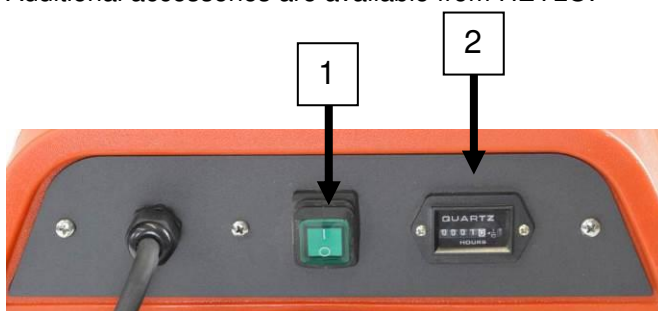
Ensure a secure location for setting up the ventilator. The unit must not be operated in puddles or in the area of splashing water. Check to see that no foreign matter is captured by intake air and gets into the fan wheel.

4. Cooling and ventilating

Overheated rooms can be cooled using the high-volume air flow of a blower. To do so, put the device on the floor or another even surface and allow air from cooler areas or from outside to flow in. The feed temperature of the air must not exceed 60 deg. C!

5. Operation

1. Set up the unit with the direction of the fan towards the requested operating position.
 2. Push the plug into an earthed 3-pole 230V shockproof socket.
 3. Set the switch (1) to "I" (EIN/ON).
 4. Prior to leaving the device, check for perfect operation. Never move the PV 1500 when switched on.
 5. The operating hours (2) that have run down can be read off at the operating hours meter.
 6. 205 mm hoses can be connected to the two hose connections.
- Additional accessories are available from HEYLO.



Hose canister (optional)

In order to be able to transport air targeted, the CPC hose canister can be connected with a hose length of 7.6 m. The CPC hose canister ensures fast fitting and removing as well as safe transport and storage of the hose - and thus ensures high savings of working time and material.



Transport

During transport in a vehicle, the PV 1500 has to be secured by safety straps in order to prevent that it slips and is damaged or passengers are injured.

NOTE!

Safely load to prevent that impact of the motor, fan blades or parts in the inside are damaged.

6. Maintenance / repair

CAUTION: Always switch off the fan and remove the mains plug before maintenance and repair. The fan wheel may continue turning when the housing is opened, and the unit is switched on.

Before every use

Check power cable Check the power cable for cuts, abrasions and damage. Do not use the unit when the cable has been damaged.

Weekly maintenance

Clean the protective grille: Check the fanwheel wings for dirt, dust and deposits. Deposits of fluff and dust reduces the air flow and may lead to overheating of the motor which constitutes a fire hazard. Use a moist cloth to clean the fan-wheel wings or use compressed air. Remove all collected fluss and other materials from the protective grille. Use a vacuum cleaner or a moist cloth to remove fluff and dust from the motor and the cover of the protective grille. **WARNING!** Make sure that no water penetrates the motor.

External inspection: Check external parts, and make sure that they are attached correctly. Check the unit for abnormal noises. Repair or replace parts as required.

Housing cleaning: Use a moist cloth to clean the housing. The original shine of the unit can be restored using HEYLO POWER CLEAN plastic cleaner (Art. No 1800104).

Monthly maintenance

Check the electric system: Check the power cable for damage in regular intervals. Regularly remove the fan, and check the cablework for worn cables, loose attachments and discoloration. Replace or repair damaged cables, if and when required. **WARNING!** Damaged cables may cause electric shocks or fire.

Ball bearings of the motor: The ball bearings of HEYLO ventilators have a life-time lubrication. For this reason, do not lubricate.

Dette produktet
kan kjøpes fra:

HOLTE
INDUSTRI



holteindustri.no
Håtteitv. 13, 3810 Gvarv
Tlf. 35 95 93 00

7. Technical data

Model	PowerVent 1500
Power consumption max. (kW)	0.164
Current consumption (A)	0.72
Air flow rate cum/h (max.)	1162
Air flow rate cum/h (NLV at 250 PA)	240
Compression (Pa) max.	266
Electric Connection (V/Hz)	230/50
Volume 3m dB(A)	68
Height / Width / Depth (mm)	350 x 310 x 380
Weight (kg)	8
Hose (diam. in mm)	205
Hose length max. (m)	2 x 7.6 m

CAUTION: Within the scope of further development, technical data may be changed without prior announcement. Some values are approximate values.

8. Fault finding and correction

WARNING: Maintenance work shall have to be carried out with the unit switched off, i.e. with mains plug removed.

PROBLEM	CAUSE	Version	SOLUTION
Motor is not operating	No power to unit. The unit has not been switched on.	B B	Connect the unit; check the fuse. Switch the unit on.
	Impeller is blocked. Air inlet or outlet is blocked.	B B	Remove the reason for the blockage. Switch the unit off and let it cool down; then remove blockage.
	Switch has broken off.	AST	Order replacement switch from the dealer or HEYLO.
	Loose wiring.	AST	Check wiring and tighten, if required.
The motor is running, but the impeller turns irregularly or makes contact	A heavy impact has bent the motor suspension so that the impeller jams.	AST	Remove the motor from the housing, replace or repair the bent motor suspension.
	A heavy impact has caused the motor to slip out of the suspension so that the impeller jams.	AST	Remove the motor from the housing, then place the motor in the suspension correctly.
Unit vibrates excessively	Collection of dirt on the wheel.	B	Clean impeller.
	Unbalance of the impeller.	AST	Balance or replace the impeller.
	Impeller is bent.	AST	Replace impeller.
	Motor shaft is bent.	AST	Replace motor.

B = User | AST = Authorised service technician

Ask your local dealer for spare parts or get in touch with HEYLO service department.

**Dette produktet
kan kjøpes fra:**

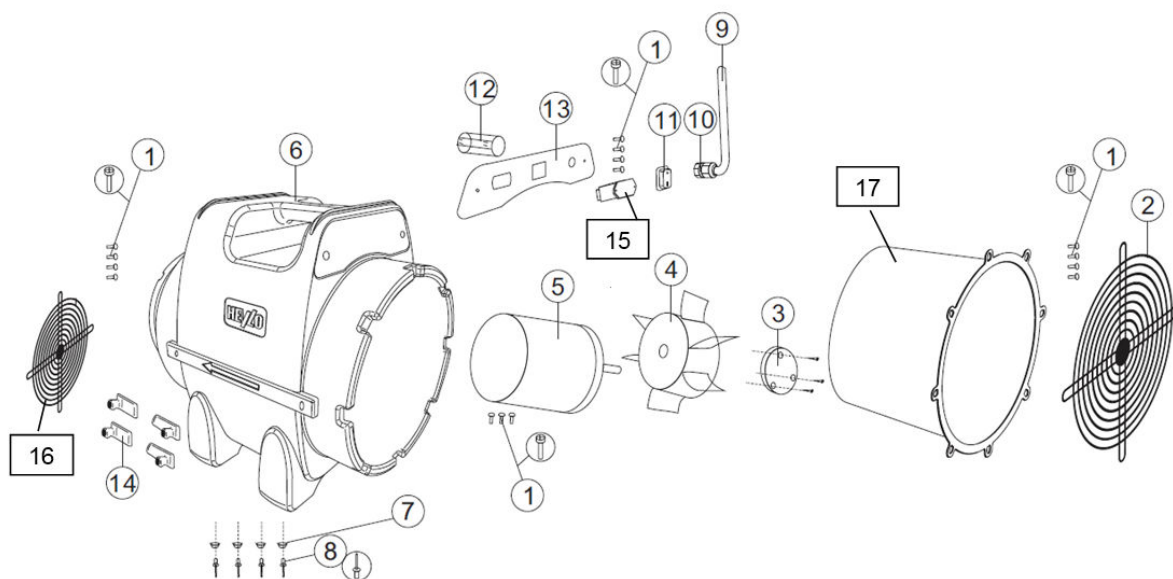
HOLTE
INDUSTRI



holteindustri.no
Håtteitvg. 13, 3810 Gvarv
Tlf. 35 95 93 00

9. List of spare parts

Item	HEYLO - Art. No.	Description
2	1761701	Fireguard - inlet
4	1761703	Fan wheel
5	1761704	Motor
7	1761706	Rubber foot
9	1761708	Power cable incl. plug
11	1761710	Switch
12	1761711	Condenser 12 μ F
13	1761712	Panel
14	1761713	Holder for hose canister
15	1761714	Operating hours counter
16	1761715	Fireguard - outlet
17	1761702	Fastening fan wheel



Dette produktet
kan kjøpes fra:

HOLTE
INDUSTRI



holteindustri.no
Håtveitvg. 13, 3810 Gvarv
Tlf. 35 95 93 00



10. Wiring diagram

